



www.cottageglen.com



920.854.9799

## TOWNHOMES

*These walk-out style townhomes offer spacious floor plans for comfortable living.*

*Each home has its own private entry, an open concept floor plan, powder room, private master suite, & cathedral ceiling in the living room. The walk-out lower level would make a perfect guest suite featuring a large family room, bedroom, full bath, & ample storage space.*

### HIGHLIGHTS

- Door County fieldstone fireplace - rough hewn mantle
- Built-in bookshelves & cabinets adjacent to fireplace
- Beadboard accents in kitchen, bath, & living room
- Whirlpool tub in master bath
- Walk-in closets
- Skylight in the master bath
- Cathedral ceiling in living room
- Living room in lower level suite
- Ceramic tile in bathrooms & foyer
- GE appliances
- Water softener
- 9' ceilings
- Solid core doors
- Attached over-sized 1-car garage
- Two storage areas on the lower level
- Propane forced air heat
- Propane connection at deck for owner's gas grill
- Central air conditioning
- Cedar siding

#### INTERIOR UNITS (2011 sf)

Living Room	15 x 17
Family Room	15 x 21
Dining Room	14 x 17
Kitchen	10 x 8
Utility Room	7 x 7
Powder Room	5 x 7
Master Bedroom	12 x 15
Master Bath	9 x 14
Second Bedroom	12 x 13
Second Bath	6 x 10
Mechanical	21 x 9
Storage	12 x 7

#### EXTERIOR UNITS (2115 sf)

Living Room	17 x 17
Family Room	16 x 20
Dining Room	13 x 17
Kitchen	11 x 9
Utility Room	8 x 6
Powder Room	5 x 7
Master Bedroom	12 x 15
Master Bath	9 x 14
Second Bedroom	12 x 13
Second Bath	10 x 6
Mechanical	13 x 10
Storage #1	15 x 9
Storage #2	12 x 6

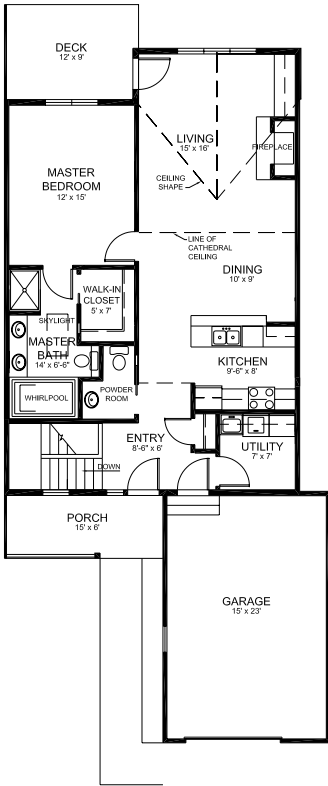
Dimensions are approximate.

Information & specifications are believed to be accurate, but are not warranted and are subject to change.

© 2007, Ellison Bay Development Co., LLC and Premier Properties of Door County Inc.

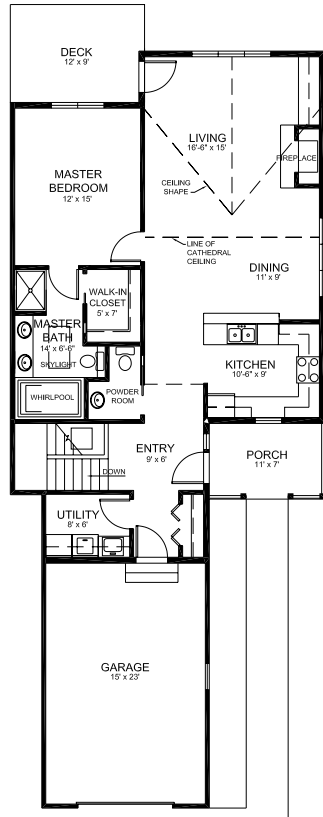
# TOWNHOMES

## Interior Unit

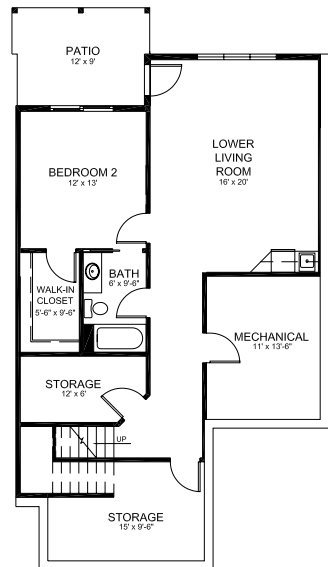
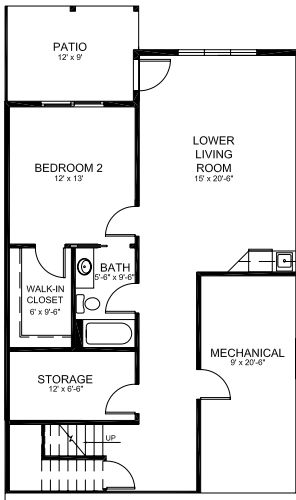


main level

## Exterior Unit



walk-out lower level



These floor plans are for the units on the left side of the building. Floor plans for the units on the right side of the building are the mirror image of these.

Dimensions are approximate.

Information & specifications are believed to be accurate, but are not warranted and are subject to change.  
 © 2007, Ellison Bay Development Co., LLC and Premier Properties of Door County Inc.