



www.cottageglen.com



920.854.9799

## IRIS

### Free-Standing Cottage Home

*This walkout style single family cottage design is unique in style with the common rooms and master suite on the main level and a complete guest suite on the lower walkout level.*

*The 2 bedroom, 2 1/2 bath home has an open concept living space, a private master suite, cathedral ceilings, & a 2-car attached garage.*

*A spacious home with a comfortable floor plan makes it practical for many different lifestyles!*



#### SPECIAL FEATURES

- Built-in bookshelves & cabinets adjacent to fireplace
- Lower level family room
- Spacious den/office
- Two unfinished storage (or bonus) rooms on lower level (15 x 11 and 33 x 11 feet)
- Attached 2-car garage (22 x 21 feet)
- Optional sunroom
- Deck (14 x 9 feet)

#### 2247 SQUARE FEET

Living Room	20 x 16
Dining Room	13 x 13
Kitchen	11 x 10
Laundry Room	10 x 6
Powder Room	5 x 5
Master Bedroom	15 x 12
Master Bath	11 x 10
Second Bedroom	14 x 12
Second Bath	9 x 6
Lower Living Room	21 x 16
Foyer	7 x 5

The Iris is suitable for only one additional site in Cottage Glen. Price is subject to negotiation due to site preparation. See marketing agent for details.

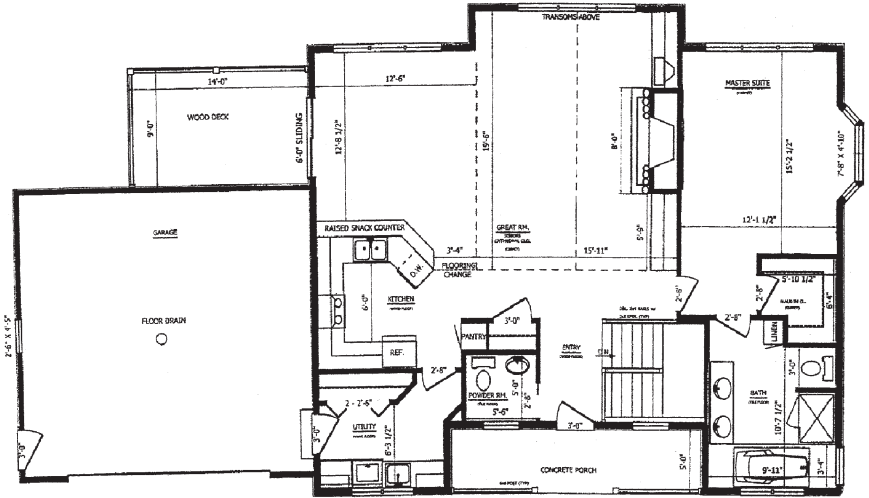
Dimensions are approximate.

Information & specifications are believed to be accurate, but are not warranted and are subject to change.

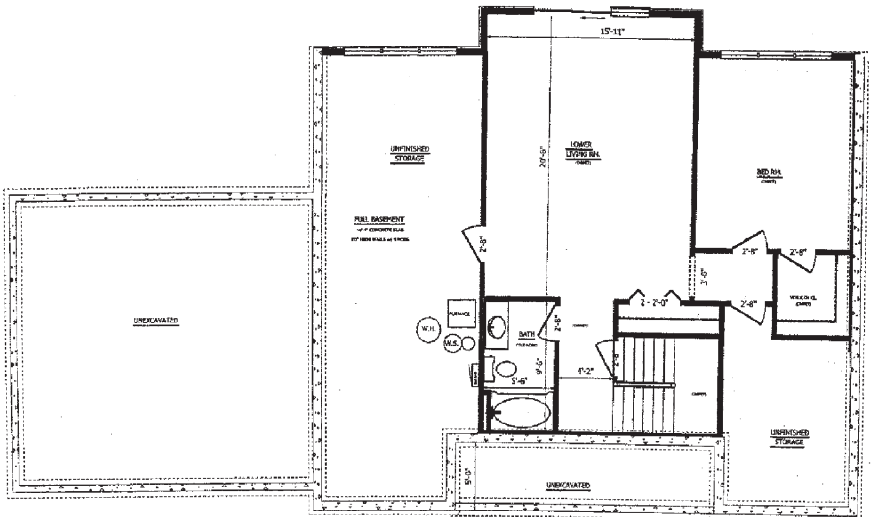
© 2007, Ellison Bay Development Co., LLC and Premier Properties of Door County Inc.

# IRIS

## Free-Standing Cottage Home



Main Level



Lower Level

Dimensions are approximate.

Information & specifications are believed to be accurate, but are not warranted and are subject to change.  
 © 2007, Ellison Bay Development Co., LLC and Premier Properties of Door County Inc.