



www.cottageglen.com



920.854.9799

BLACK-EYED SUSAN Free-Standing Cottage Home

This single family cottage design offers a spectacular master suite on the entire second level - including a sitting room, spacious walk-in closet, & luxurious bath.

The home also features a vaulted ceiling and Door County fieldstone fireplace in the living room, tile flooring, beadboard accents, and an attached garage.

A large deck offers a place to enjoy the natural setting.



SPECIAL FEATURES

- Skylight in master bath
- Walk-in closet in master suite
- Study in master suite
- Cathedral ceiling in living room
- Deck (12 x 12 feet)
- Attached 1-car garage (23 x 16 feet)

Please see

"Free-Standing Cottage Homes"
for "Cottage Home Highlights"

1761 SQUARE FEET

Living Room	17 x 13
Dining Room	17 x 12
Kitchen	12 x 12
Laundry Room	8 x 5
Master Bedroom	14 x 13
Master Bath	17 x 7
Sitting Room	13 x 12
Second Bedroom	13 x 12
Second Bath	9 x 8
Foyer	9 x 5

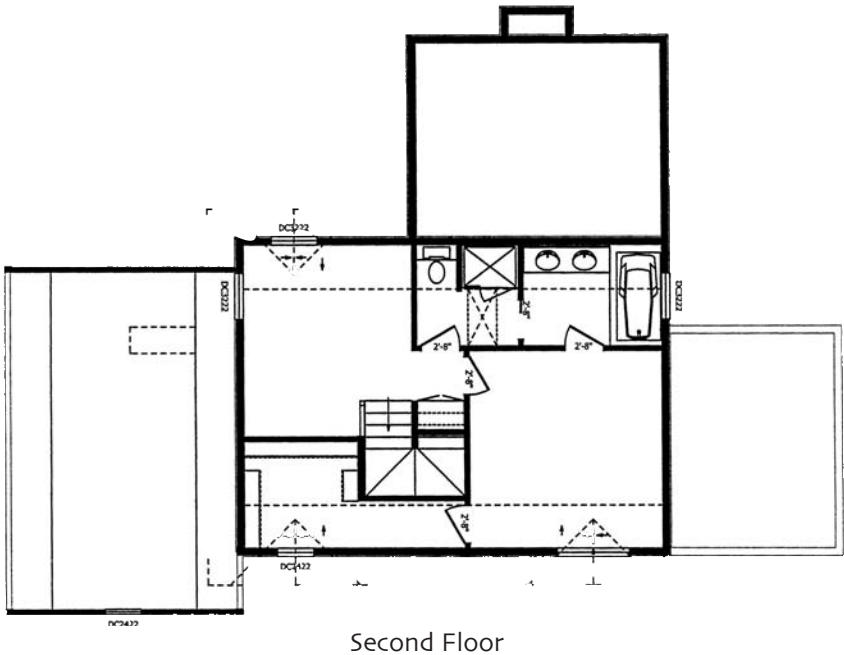
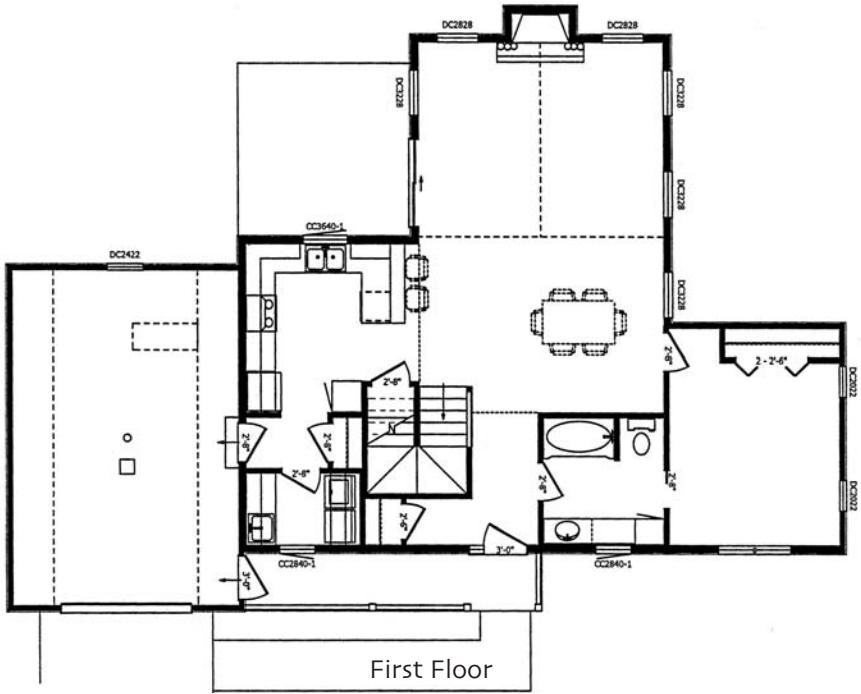
Dimensions are approximate.

Information & specifications are believed to be accurate, but are not warranted and are subject to change.

© 2007, Ellison Bay Development Co., LLC and Premier Properties of Door County Inc.

BLACK-EYED SUSAN

Free-Standing Cottage Home



Dimensions are approximate.

Information & specifications are believed to be accurate, but are not warranted and are subject to change.
© 2007, Ellison Bay Development Co., LLC and Premier Properties of Door County Inc.