



[www.cottageglen.com](http://www.cottageglen.com)



920.854.9799

## RESALE AVAILABLE • TOWNHOME RESIDENCE

11909 Cottage Glen Drive - Thimbleberry Building - Unit 4017  
\$349,000.



### HIGHLIGHTS • PRIVATE END-UNIT

- Door County fieldstone fireplace - rough hewn mantle
- Built-in bookshelves & cabinets adjacent to fireplace
- Beadboard accents in kitchen, bath, & living room
- Whirlpool tub in master bath
- Walk-in closets
- Skylight in the master bath
- Great room with cathedral ceiling and wood flooring
- Large second living room with wet bar on walk-out level
- Ceramic tile in bathrooms & foyer
- GE appliances
- Water softener
- 9' ceilings
- Solid 6-panel doors
- Attached over-sized 1-car garage
- Three storage areas on the lower level
- Propane forced air heat
- Central air conditioning
- Cedar siding
- Deck on main level with propane connection for grill
- Walk-out level patio deck

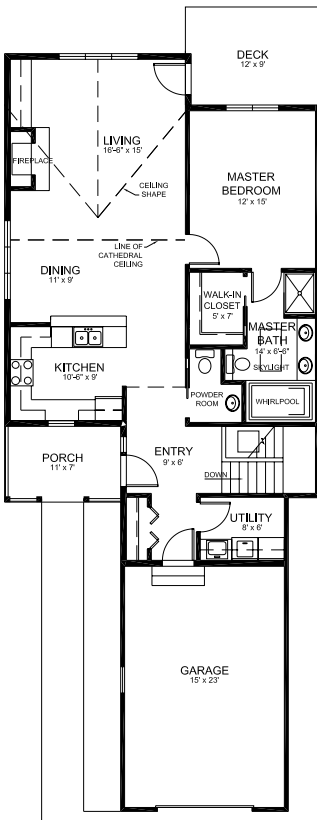
Information & specifications are believed to be accurate, but are not warranted and are subject to change.  
© 2009, Ellison Bay Development Co., LLC and Premier Properties of Door County Inc.

# UNIT 4017 - TOWNHOME

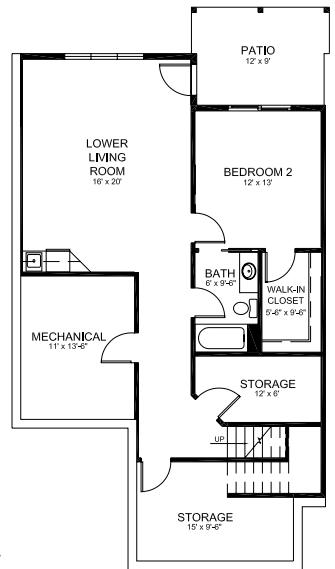


Floor Plan

entry level



walk-out lower level



## 2115 SQUARE FEET

Living Room	17 X 17
Family Room	16 X 20
Dining Room	13 X 17
Kitchen	11 X 9
Utility Room	8 X 6
Powder Room	5 X 7
Master Bedroom	12 X 15
Master Bath	9 X 14
Second Bedroom	12 X 13
Second Bath	10 X 6
Mechanical	13 X 10
Storage #1	15 X 9
Storage #2	12 X 6
Deck	12 X 9
Patio	12 X 9

Dimensions are approximate. Certain items may have been altered from the plan. Information & specifications are believed to be accurate, but are not warranted and are subject to change.  
© 2009, Ellison Bay Development Co., LLC and Premier Properties of Door County Inc.